

UFO & Roker Plus User Manual

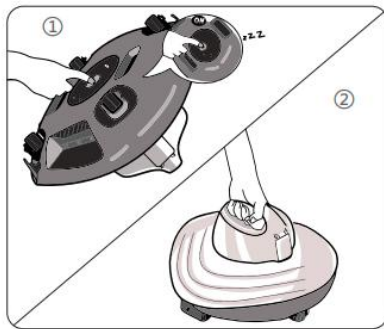
Video show:



PC03 - 整体.mp4

Turn on the machine to work

- ① Press the power switch at the bottom. Green light at the button, first two short beeps and one long beep, then one short beep every second, and the device continues to sound after releasing the button, the device is turned on.
- ② Grab the handle, put the device on the water surface, let go and wait for the device to automatically sink into the water to start working.



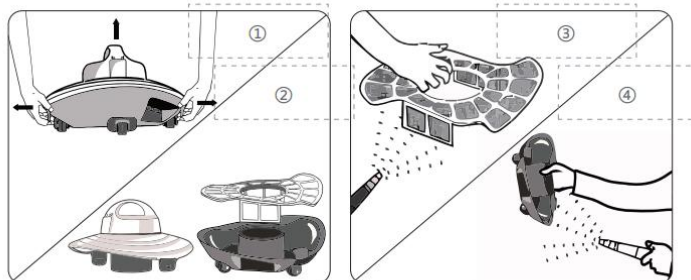
Video show:



PC03 - 开机声音.mp4

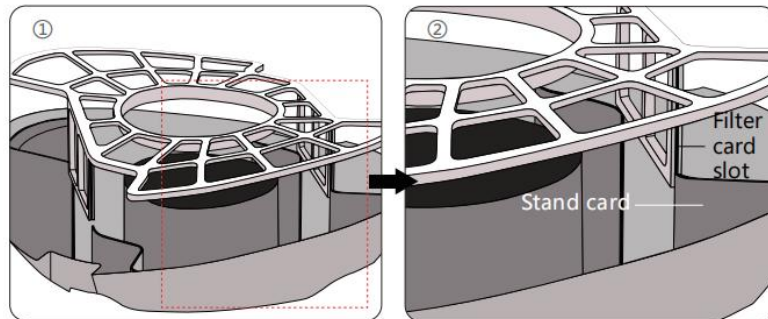
Clean up the garbage

- ① Gently pull the buckle on both sides of the machine and slightly shake the machine to make the two parts of the machine separate
- ② Remove the screen and clean the garbage in the screen and the bottom bracket separately



Installation

- ① Align the slots on both sides of the filter with the slots on the bottom bracket, and press down
- ② Align the left and right buckles of the body with the bottom bracket slot, and press down



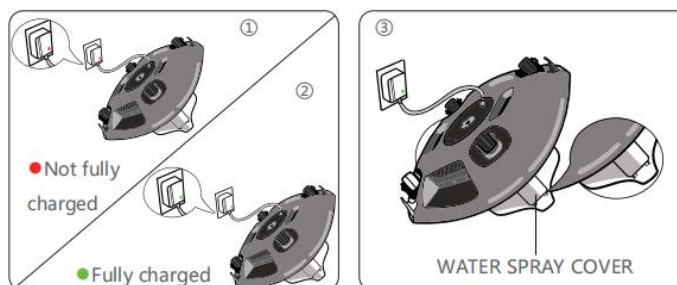
Video show:



PC03-滤网.mp4

Charging

- ① clean up the garbage, reinstall the machine after 20 minutes of rest before charging
- ② plug in the charging line, the charger lights up red that is charging, lights up green that charging is over (10 minutes after charging is completed automatically power off)
- ③ top of the machine water spray cover do not press on the ground



Caution

- ① Roker Plus is only suitable for pools with flat bottom
- ② The water depth should be 0.5-3m
- ③ During the idle period, charge the machine at least once a month to maintain the battery

FAQ

Q: The machine beeps once every 3 seconds

A: The machine is not completely covered with water

Q: The machine beeps short

A: The power is low and needs to be charged

Q: The machine beeps long

A: The machine is not turned off when charging

Q: The machine travels very slowly or the cleaning effect is weakened

A: The filter is clogged with too much garbage

Q: The machine into the water does not move, how to solve?

A:

Step 1: First determine if it is booting properly, attached the video



PC03 - 开机声音.mp4

Step 2: If it is normal to turn on the machine, then check whether the filter is blocked, some pools are large and dirty, then the machine may operate for a while after the wave is full of suction, so it can not move. (You can ask the customer to take out the filter, the machine into the water, to see whether the normal operation. If it runs normally, then the filter is blocked. If it still doesn't work properly, that's not the reason.)

Step 3: The machine is immersed in the pool for a long time and does not work, you need to check whether the water detection needle is covered by scale, please first wipe the water detection needle. After cleaning, the machine works normally.

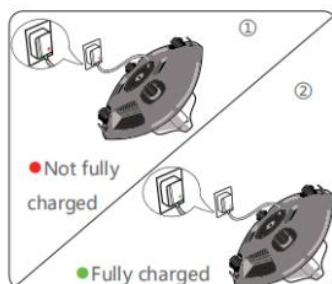
Step 4: If none of the above problems are present, may be out of battery. There are also two reasons for running out of battery:

Reason one: running out of battery:

Observe the indicator on the charger:

①Red indicates the device is not fully charged;

②Green indicates the device is fully charged;



Reason two: the battery is not properly maintained and has decayed

How to maintain the machine when not in use?

During the off-season period, charge the device once a month to protect its abattery